



# Ullahas Nandini Complex

Block 4 ( residential cum commercial)

Exceptional modern homes in a prestigious location at the GT Road Durgapur Expressway crossing.

**FOR SALE**



## Superb Location, Terrific Connectivity

- Durgapur Expressway and the legendary GT Road are wide and congestion free, easily connecting residents to any part of the city
- The Burdwan Railway Station is just 5 km. away, and Alisha Bus stand is just opposite the road of the project
- Neighborhood schools include St. Pauls School, St. Xavier's School, Magnus Global School, and Town Hall School etc. For higher education, colleges to name are Vivekananda Mahavidyalaya, Burdwan Womens College, Burdwan Raj College, Burdwan Medical College, U.I.T, Burdwan University and Netaji Subhas Open University.
- For shopping pleasure, there are Burdwan Arcade (Big Bazar) with multiplex and other hi-fi entertainment features, Reliance Trends, M-Bazar, Pantaloons etc.

### Developed & Marketed by

R H Progressive Developers LLP  
Flat-7,60B, Chowringhee Road,  
Kolkata-700020, West Bengal  
Email-rhprogressivedev@gmail.com

### Co-Promoter

Ullahas Nandini Udyog Pvt. Ltd.  
3/1/2 Haradeb Bhattacharya Lane,  
Shibpur, Howrah 711102  
Email -ullahasnandinibwn@gmail.com

### Architect

The Design Cell  
(2A, Cooper Street, Kolkata -700026)

### Developed & Marketed by

R H Progressive Developers LLP  
**Co-Promoter**  
Ullahas Nandini Udyog Pvt. Ltd.

FOR MORE INFORMATION

**98009 15555 / 98009 75555**

**OFFICE - 8016087432**

Alisha, Ullahas 1st Avenue, Chandni more, G.T - Road, Purba Bardhaman - 713101



# Ullahas Nandini Complex

Block 4 ( residential cum commercial)







Gym (A/C)



Elevator – six passengers capacity



Community Hall (A/C)



Badminton Court



Landscape garden and play area



Power Back up



Round the clock security



24 hours water supply from own reservoir (1,52,000 ltrs)

## Common Facilities & Amenities

You will find a generous green cover that goes beyond mere aesthetics to eliminating pollution, muffing noise, and insulating the living areas from temperature extremes – in the heart of a vibrant township – the Ullahas Nandini Complex.

## Specification

**Building:** Designed on RCC Frame structure with RCC strip foundation

**Interior Walls:** 125 mm thick brick masonry

**Exterior Walls:** 250 mm thick brick masonry

**Doors:** Quality timber frame with solid core and decorative flush doors with main door

**Windows:** UPVC sliding windows with tough end glass, inside grill

**Living/ Dining/ Bed Room:** Vitrified tiles (800x800 Johnson premium)

**Kitchen:** Vitrified flooring and tiles in dados, granite on kitchen platform, stainless steel sink for counter top

**Sanitary Ware:** Quality sanitary ware and fixtures (Jaquar)

**Electricals:** Concealed copper wiring with high quality switch, provisions for adequate lights, plugs, telephone, TV, AC, exhaust and geyser points in appropriate location.





## Master Plan







### AREA STATEMENT

FLAT MRKD	NO. OF BED RM	BUILT-UP AREA	SUPER BUILT-UP AREA
TYPE A	3	1147.33 SQFT	1434.16 SQFT
TYPE B	3	1076.96 SQFT	1346.20 SQFT
TYPE C	2	908.68 SQFT	1135.85 SQFT
TYPE D	2	870.37 SQFT	1087.96 SQFT
TYPE E	2	842.40 SQFT	1053.00 SQFT
TYPE F	2	887.48 SQFT	1109.35 SQFT
TYPE G	3	948.17 SQFT	1185.21 SQFT
TYPE H	2	727.48 SQFT	909.35 SQFT
TYPE I	2	726.52 SQFT	908.15 SQFT
TYPE J	3	1115.59 SQFT	1394.48 SQFT



### Area Statement

Flat Marked	No of Bedroom	Built-up Area	Super Built-up Area
Type A	3	1147.33 SQFT.	1434.16 SQFT.



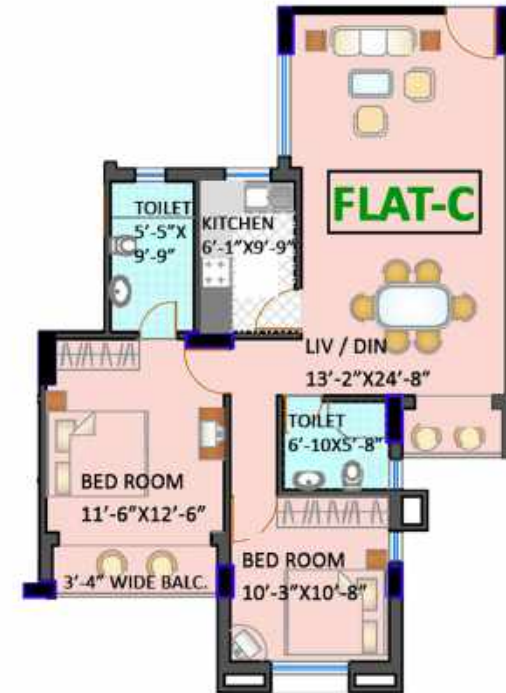
### Area Statement

Flat Marked	No of Bedroom	Built-up Area	Super Built-up Area
Type D	2	870.37 SQFT.	1087.96 SQFT.



### Area Statement

Flat Marked	No of Bedroom	Built-up Area	Super Built-up Area
Type B	3	1076.96 SQFT.	1346.20 SQFT.



### Area Statement

Flat Marked	No of Bedroom	Built-up Area	Super Built-up Area
Type C	2	908.68 SQFT.	1135.85 SQFT.





**FLAT-E**

## Area Statement

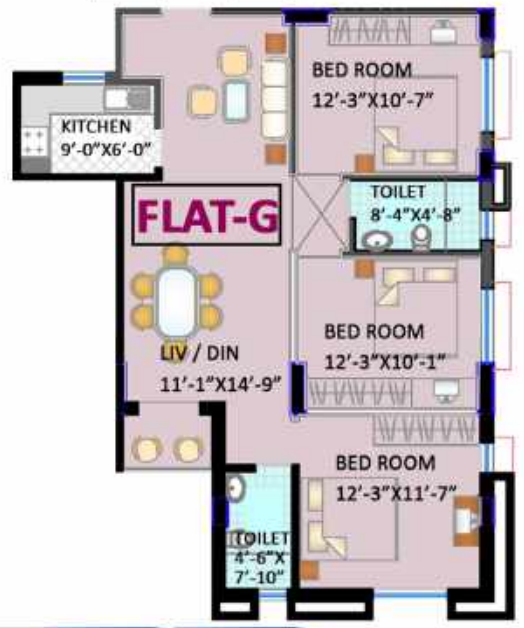
Flat Marked	No of Bedroom	Built-up Area	Super Built-up Area
Type E	2	842.40 SQFT.	1053.00 SQFT.



**FLAT-F**

## Area Statement

Flat Marked	No of Bedroom	Built-up Area	Super Built-up Area
Type F	2	887.48 SQFT.	1109.35 SQFT.



**FLAT-G**

## Area Statement

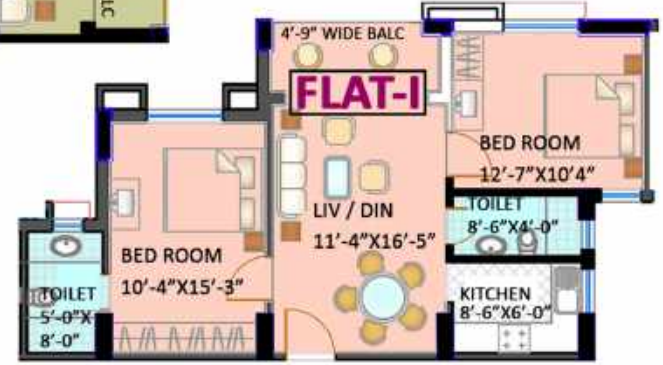
Flat Marked	No of Bedroom	Built-up Area	Super Built-up Area
Type G	3	948.17 SQFT.	1185.21 SQFT.



**FLAT-H**

## Area Statement

Flat Marked	No of Bedroom	Built-up Area	Super Built-up Area
Type H	2	727.48 SQFT.	909.35 SQFT.



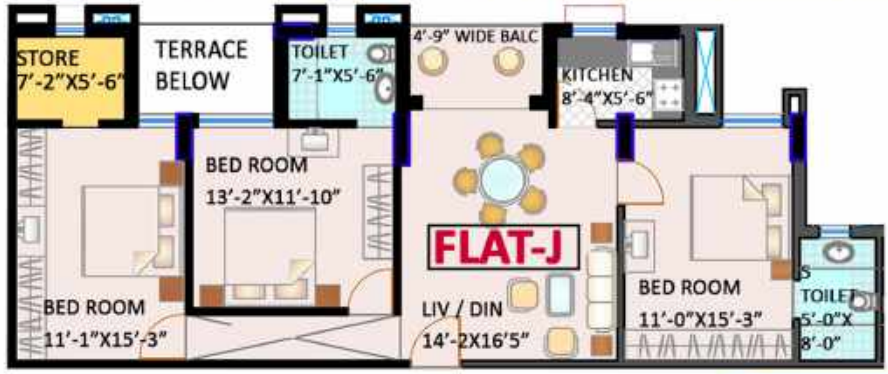
**FLAT-I**

## Area Statement

Flat Marked	No of Bedroom	Built-up Area	Super Built-up Area
Type J	3	1115.59 SQFT.	1394.48 SQFT.

## Area Statement

Flat Marked	No of Bedroom	Built-up Area	Super Built-up Area
Type I	2	726.52 SQFT.	908.15 SQFT.



**FLAT-J**