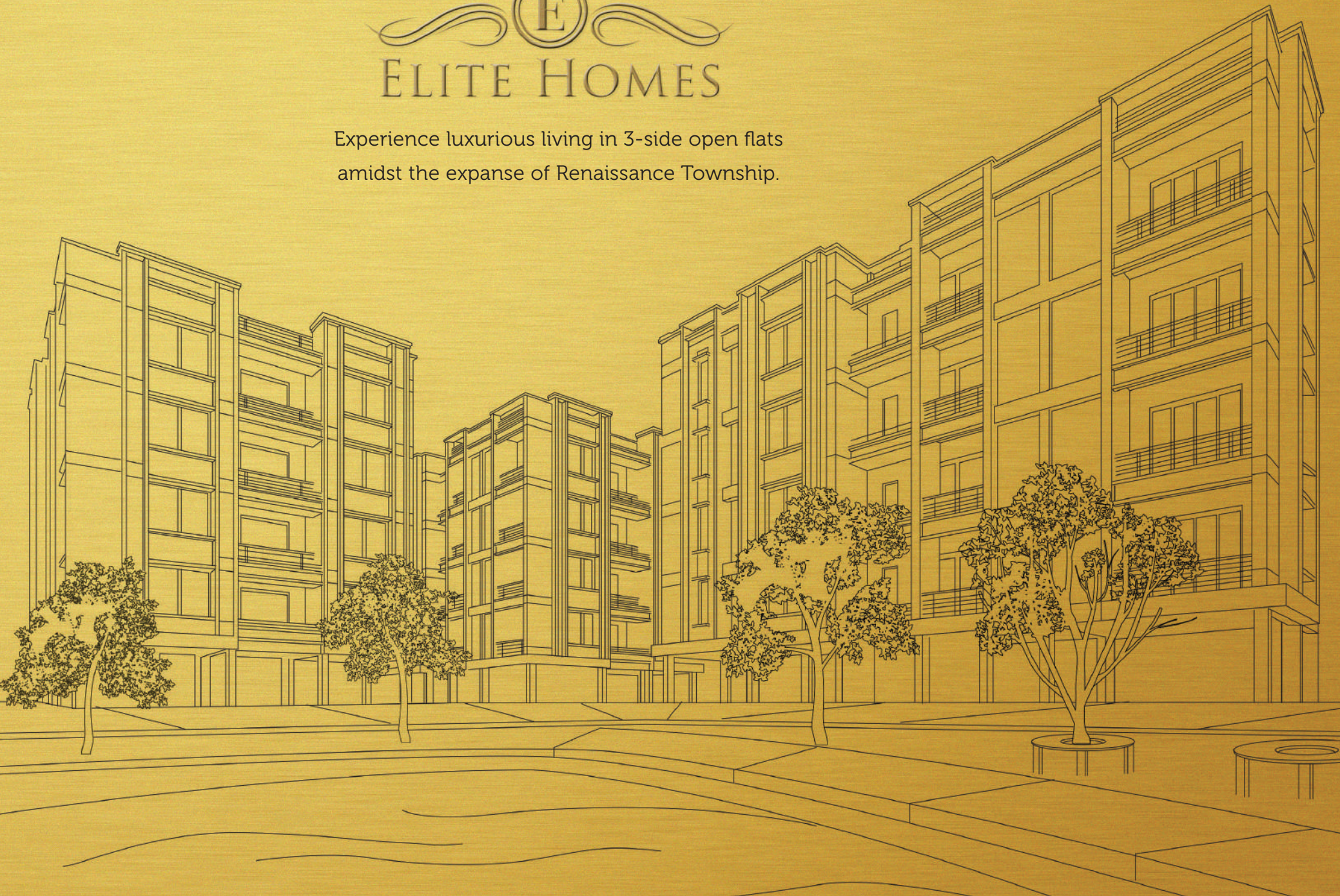
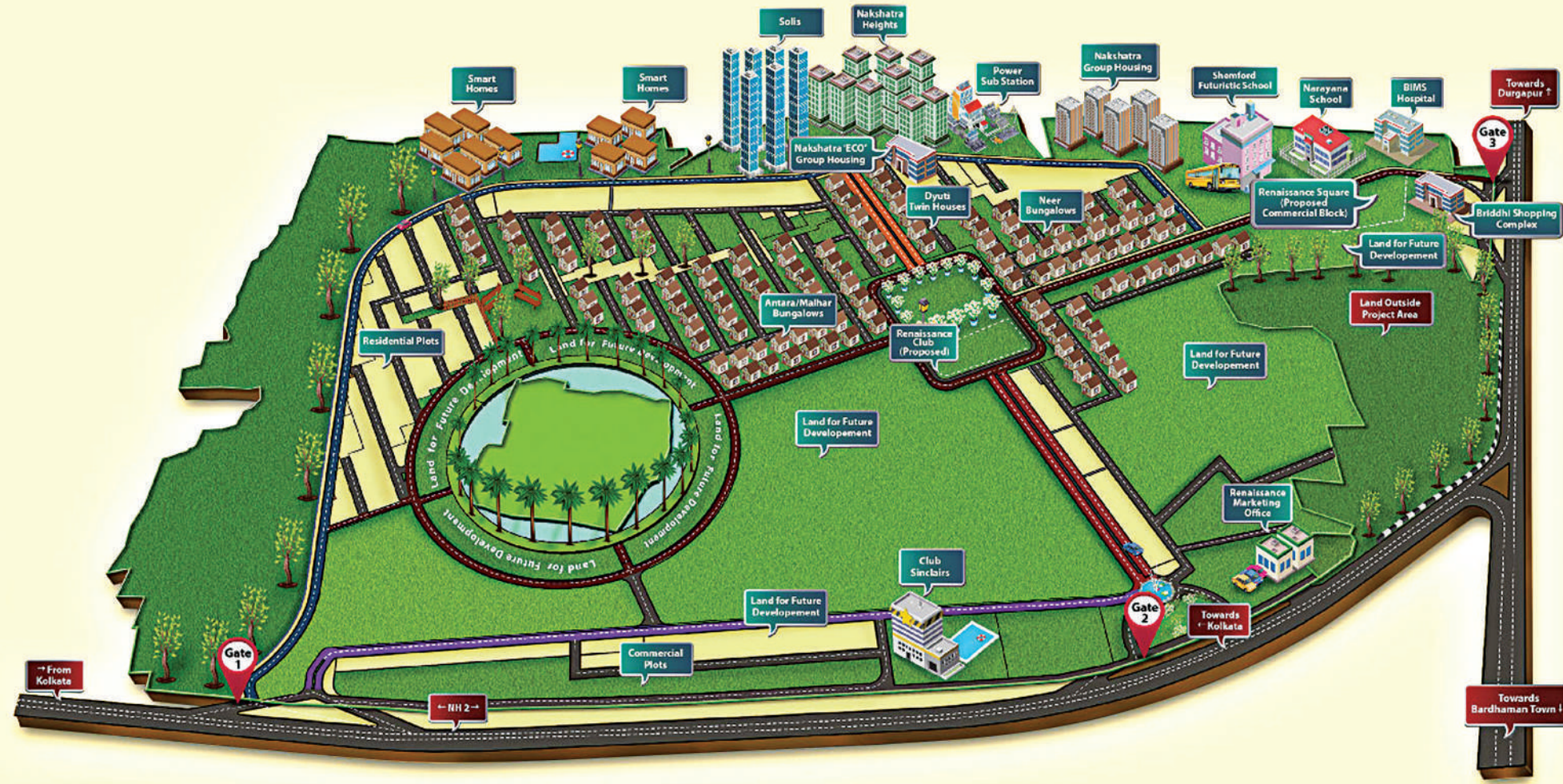




ELITE HOMES

Experience luxurious living in 3-side open flats
amidst the expanse of Renaissance Township.





Renaissance[®]
Township
नलून वरुयान

Welcome to an integrated township where amenities and greenery live in perfect harmony. A place where dreams take shape and wishes are lived. Spread over a sprawling 224-acre, this is a place where you don't live, it is a place where you come alive.



Entry Gate 2



Marketing Office Entry



Group Housing Ground



Entry Gate



Narayana School



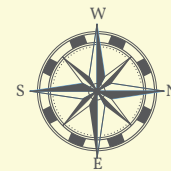
BIMS Hospital



Shemford Futuristic School

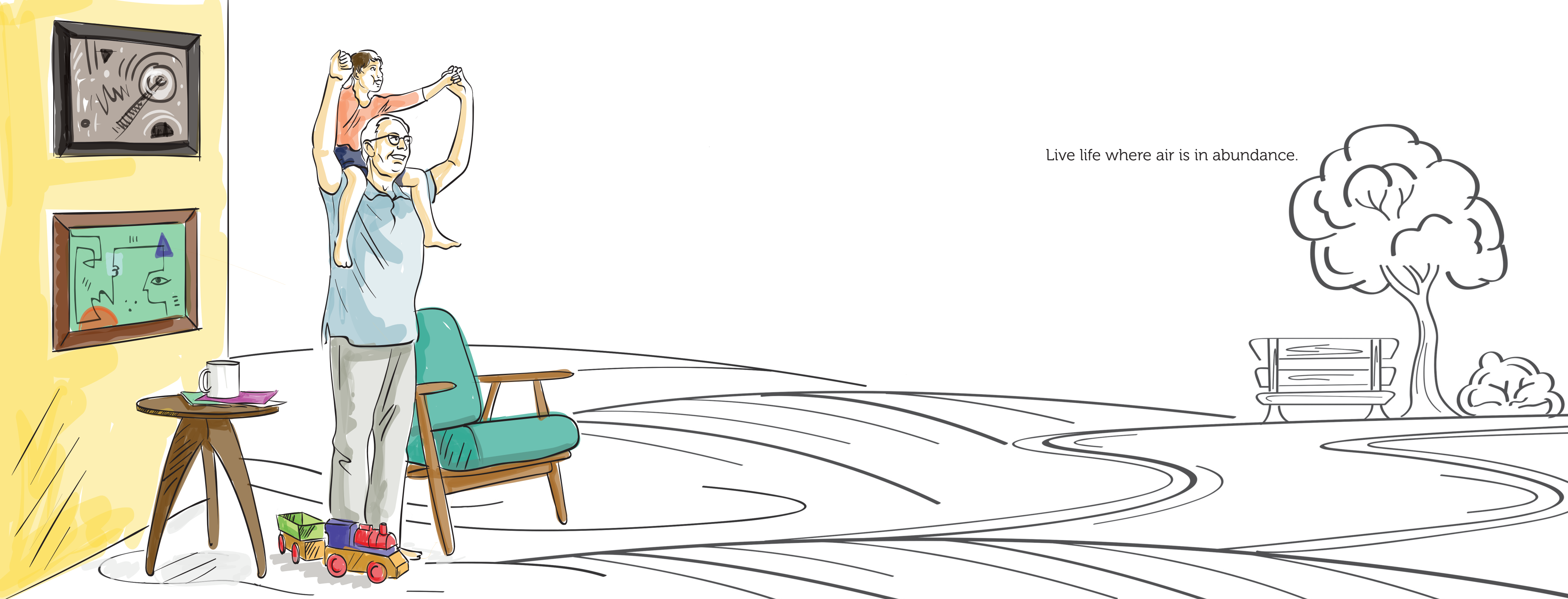


Briddhi Shopping Complex

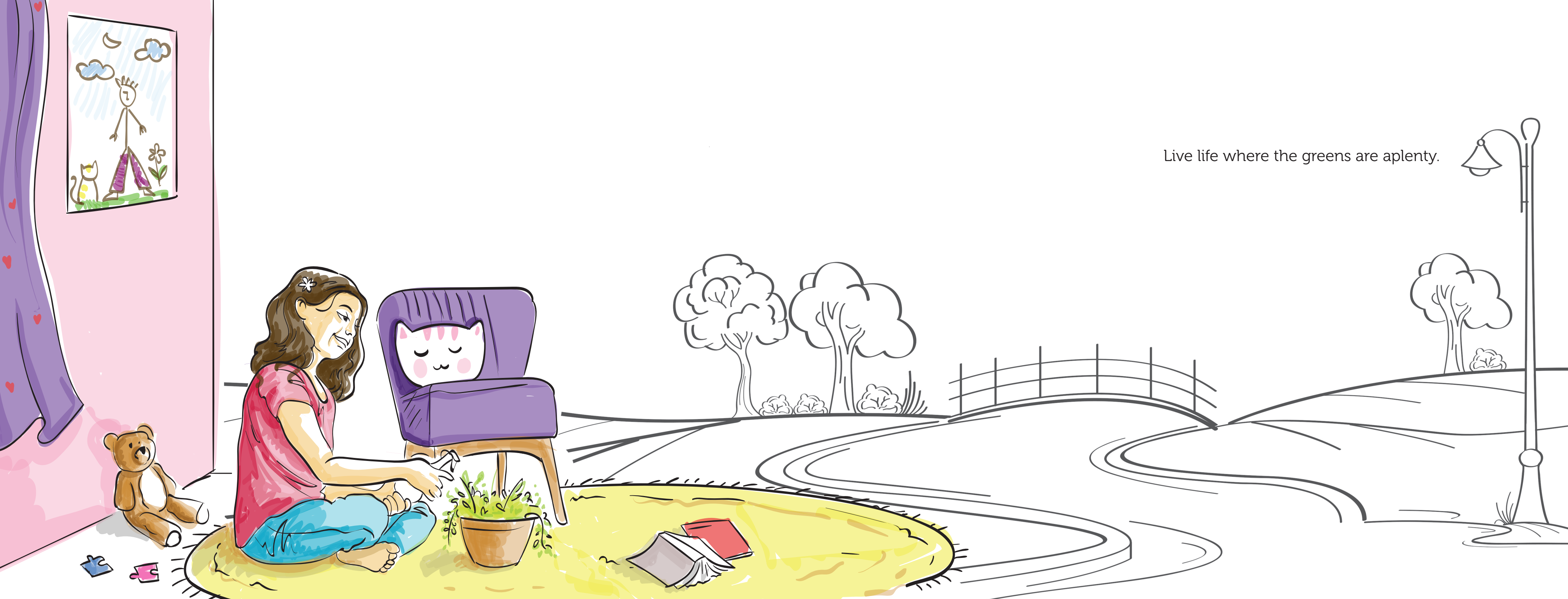




Live life where the sunrays are endless.



Live life where air is in abundance.



Live life where the greens are aplenty.



ELITE HOMES

Live life at Renaissance Township Elite Homes.
Where the 3-side open apartments make life thrice as premium.
Where every moment feels alive.
Where your joy is not confined within the four walls.
And where happiness is not limited by space.
Come experience limitless living.
Come experience limitless luxury.





Artist's impression



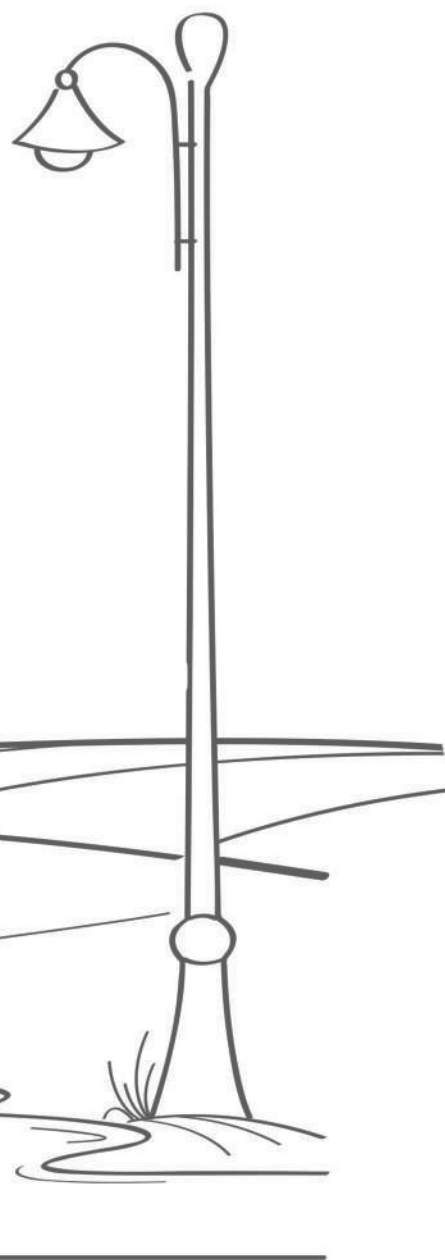
Artist's impression



Artist's impression



Project Specifications



Structure

RCC framed structure

Bedrooms

Floor - Good quality vitrified tiles size 800mm x 800mm
Walls - Pop

Living/Dinning

Floor - Good quality vitrified tiles size 800mm x 800mm
Walls - Pop

Kitchen

Floor - Good quality joint-free anti-skid ceramic tiles
Walls - Ceramic tiles up to 2 ft above counter
Counter - Granite
Sink - Stainless steel

Balcony

Floor - Good quality joint-free anti-skid ceramic tiles

Toilet

Floor - Good quality joint-free anti-skid ceramic tiles
Walls - Ceramic tiles up to full height
Door - Good quality PVC door
Wc - Good quality EWC with concealed cistern
Wash Basin - good quality porcelain with half pedestal
Geyser provision for all toilets

Door

Internal - Flush door
Main - Laminated flush door

Window

Aluminium powder coated

External Finish

Weather coat paint over plaster

Electrical

Switches - Modular switches of reputed make
MCB - MCB of reputed make
Wiring - Concealed copper wiring
Telephone points - Living room and master bedroom
TV points - Provision in living room and master bedroom
Electrical points - Adequate light and fan points
AC - Living, dining room and all the bedrooms

DG Back up

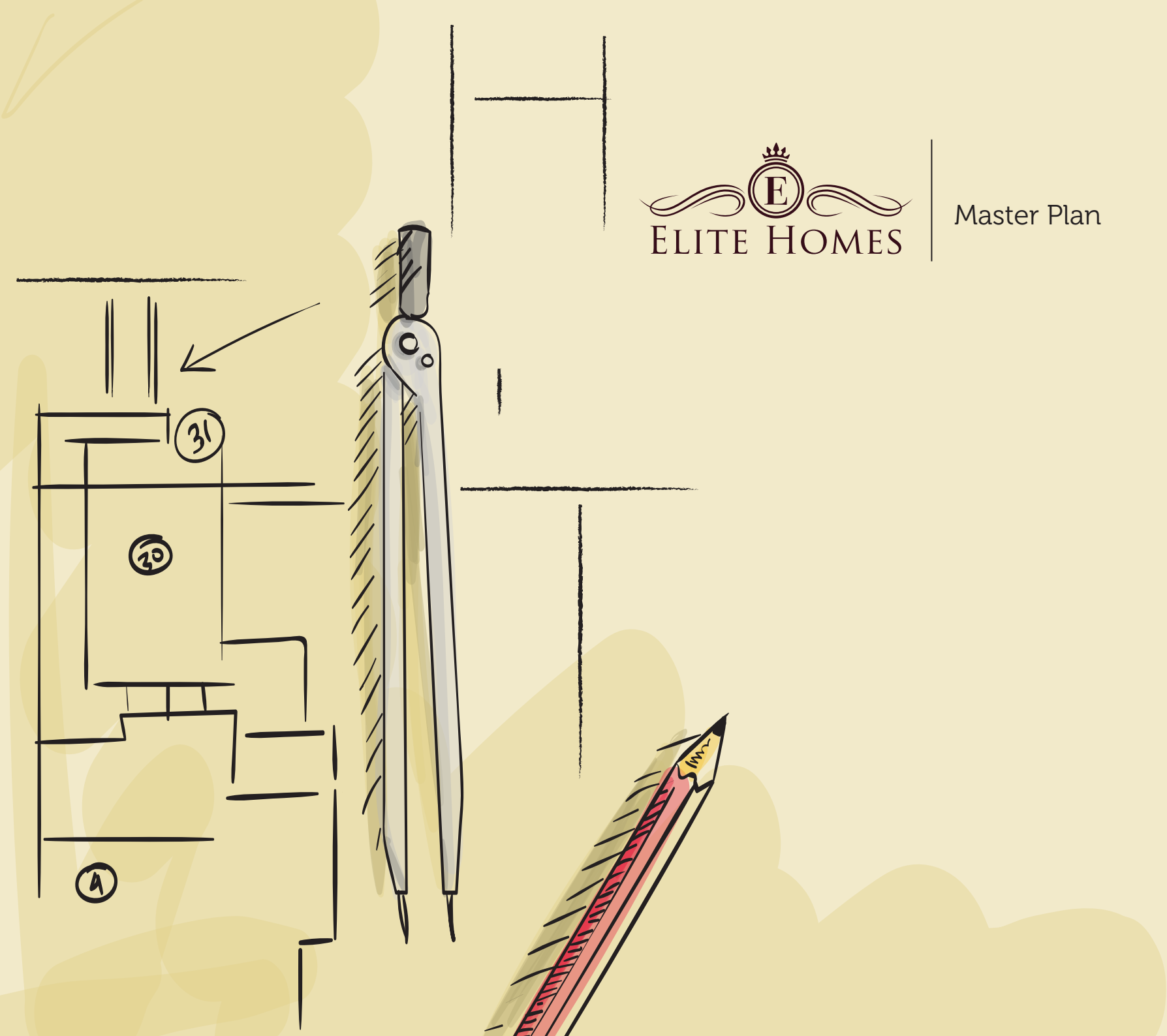
Available

Common Areas

Staircase - Anti-skid tiles/kota
Lift lobby - Vitrified tiles
Lift - From reputed makers

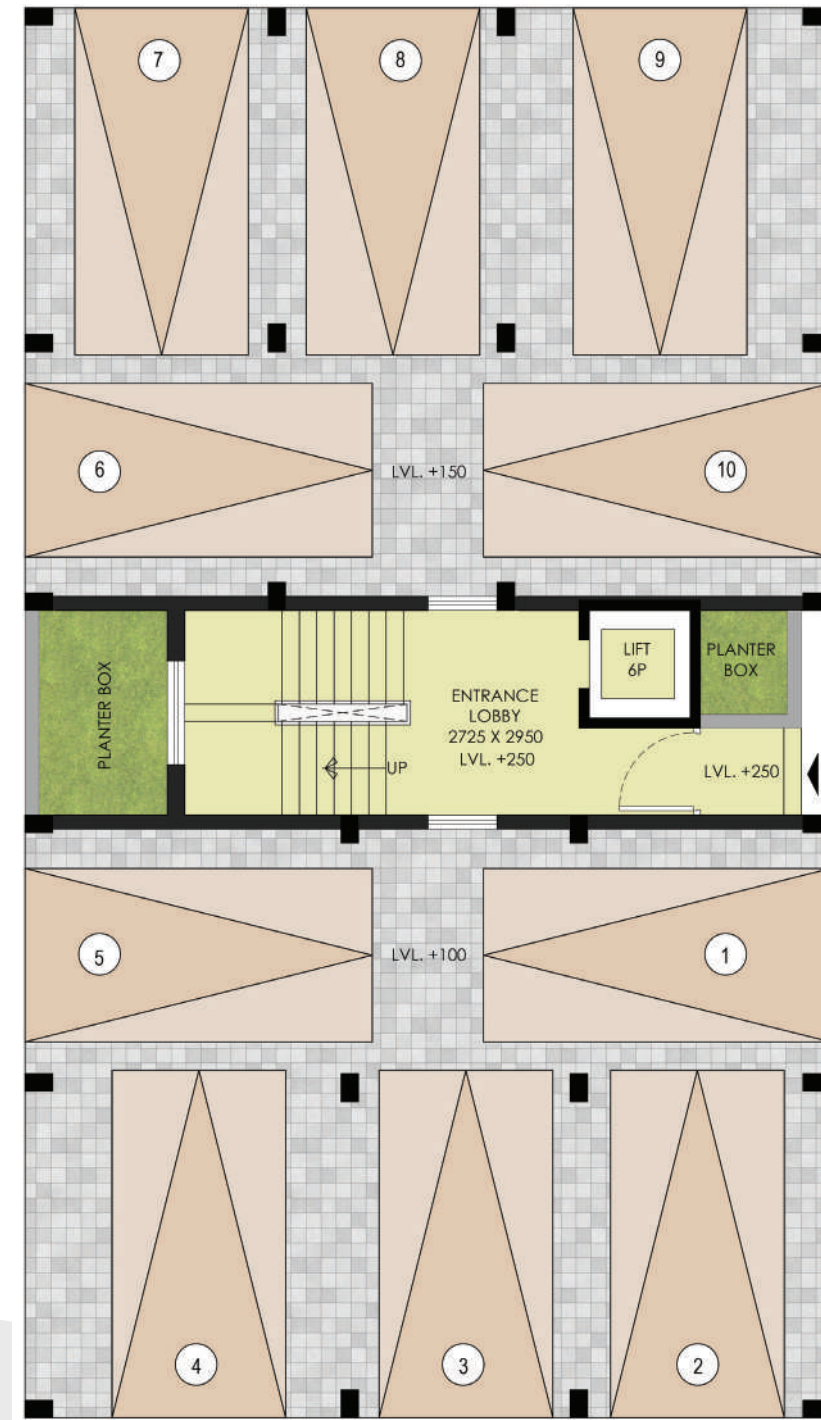
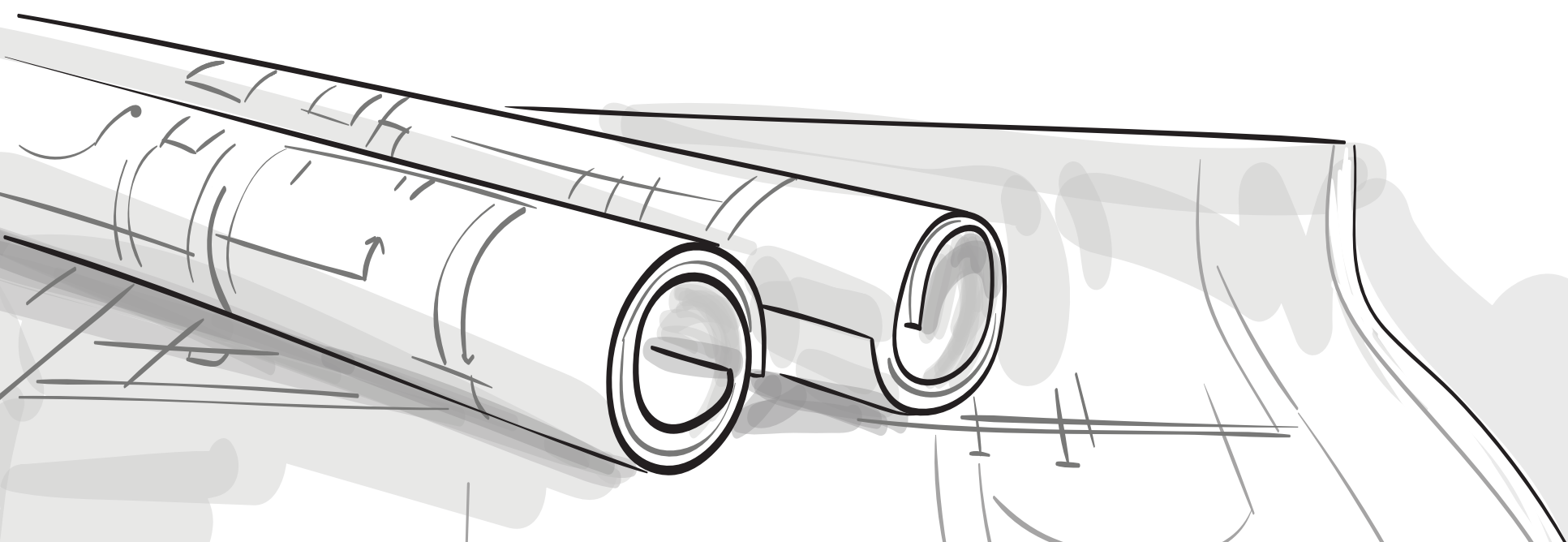
Security System

CCTV - CCTV cameras at complex entry

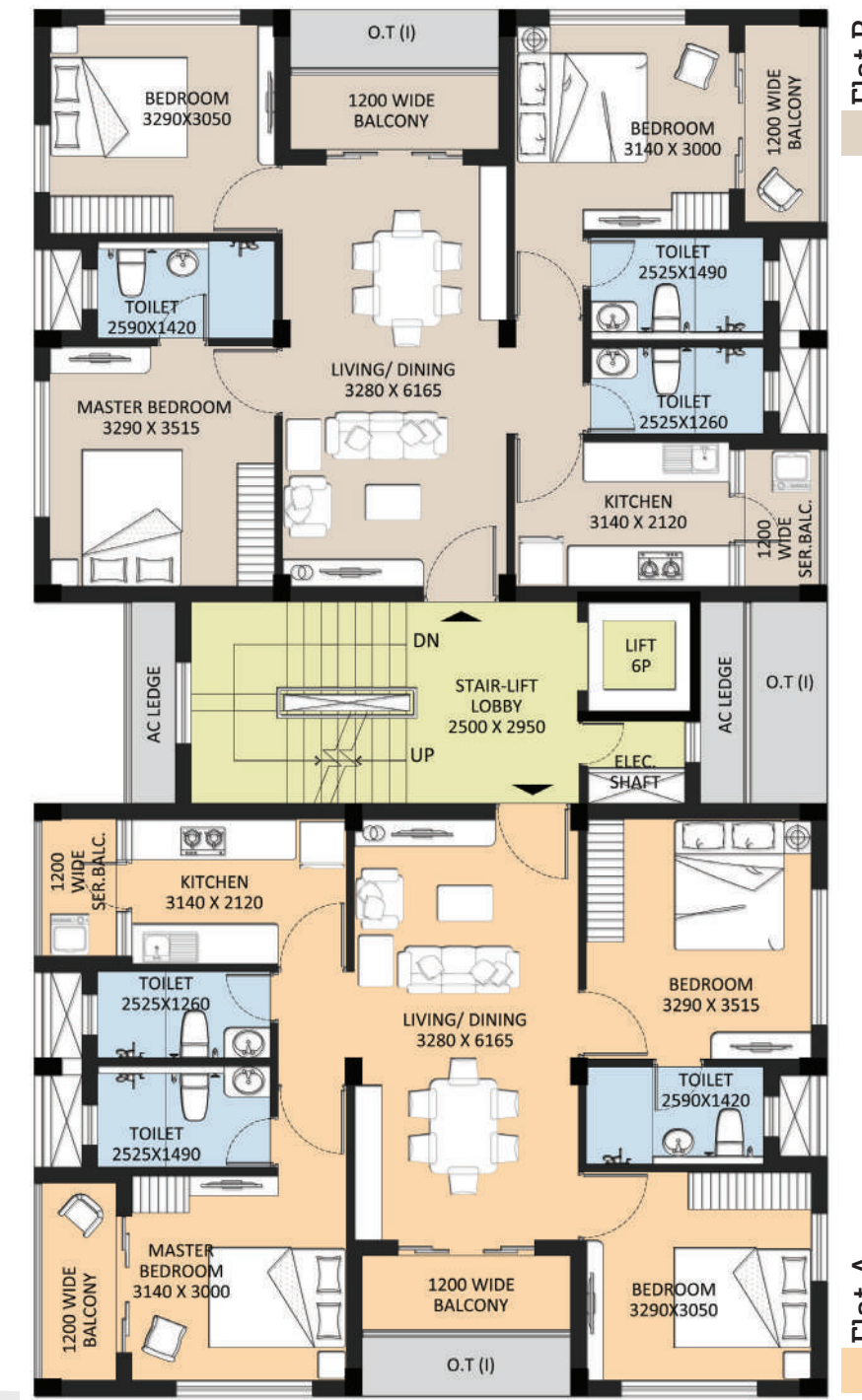


Super Builtup area

Flat type	No. of Flat/ floor	Tower nos.	SBUA (sft.)	BUA (sft.)	Carpet area as per RERA (sft.)	Balcony area (sft.)	Total no. of flats	
3 BHK	A,B	2	3	1353	1023	805	103	24



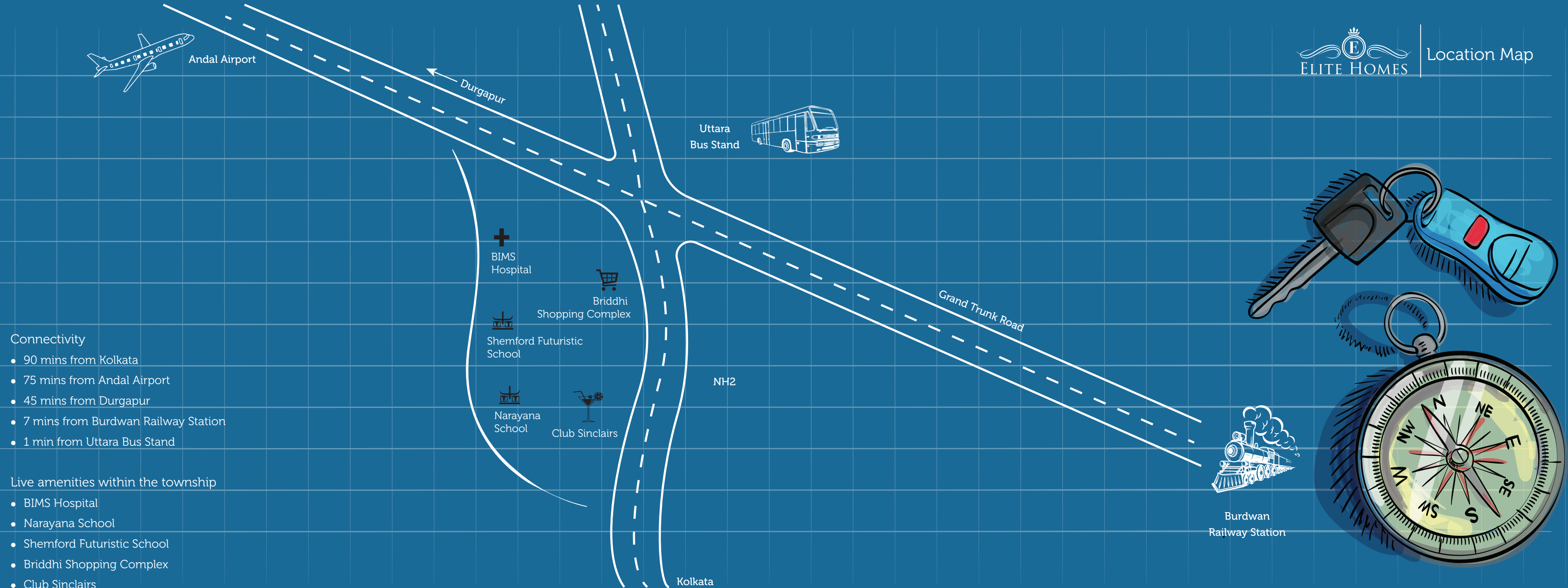
GROUND FLOOR PLAN



TYPICAL FLOOR PLAN (1ST TO 4TH FLOOR)

Flat B

Flat A



Connectivity

- 90 mins from Kolkata
- 75 mins from Andal Airport
- 45 mins from Durgapur
- 7 mins from Burdwan Railway Station
- 1 min from Uttara Bus Stand

Live amenities within the township

- BIMS Hospital
- Narayana School
- Shemford Futuristic School
- Briddhi Shopping Complex
- Club Sinclairs



Solis



Smart Homes



Bungalow



Nakshatra heights



Neer


ELITE HOMES
Other Projects in
Renaissance Township





About Shrachi Group

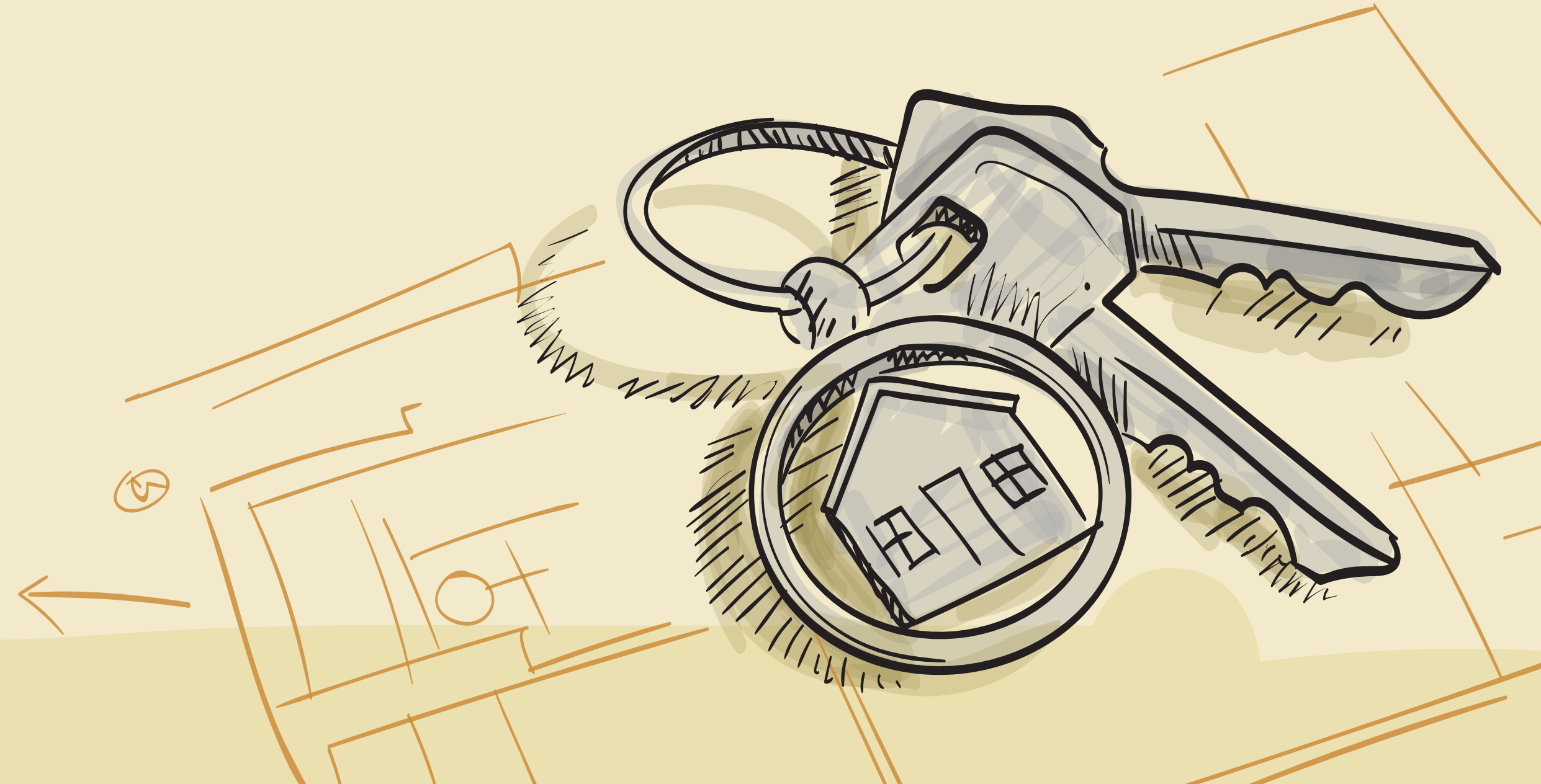
Shrachi Group has been one of the leading real estate developers in Eastern India. Over two decades, the group has built an impeccable reputation with their residential & commercial real estate projects. Some of their landmark projects are Urbana, South City Apartments & Mall, Synthesis Business Park, Home Town, Greenwood Sonata, Rosedale, Greenwood Nook, Junction Mall (Durgapur) and many more.

Architect's Profile

Subir Basu, the founder of Consulting Architects & Engineers is an Indian architect, urban designer and academician. He is the elected member representing the Eastern Region of India in the Council of Architecture (COA), Government of India.

During his career spanning over 3 decades, Subir Kumar Basu has been involved with architectural design in India & abroad and execution of many high profile Housing and Residential Projects, Hospitals, Hotels, Commercial Projects like Office Buildings, Industrial Projects etc. He is specialized in the sector of large Housing Complex and Township Projects.

Subir Kumar Basu is the architect of various projects of Government, Semi-Government, Joint Sector Companies such as Metro Railway, East West Metro Railway, Mackintosh Burn Ltd., Bengal Greenfield Housing Development Company Ltd. etc.





Corporate office: Shrachi Tower, 8th Floor, 686 Anandapur, EM Bypass, R B Connector Junction, Kolkata - 700 107

Site address: Renaissance Township, National Highway 2, West Bengal 713102

P 91-33-4984 4984 | **E** sales@shrachi.com | **W** shrachirealty.com

Disclaimer: Images used in the brochure, including those of interior decorations, furniture layouts and the landscape are all artist's impression.

All furniture and accessories shown in the photographs/plans are only by way of suggestions as to the manner in which a unit may be used and the same do not form part of specifications or deliverables.

This brochure is merely a display document and not be construed as a legal document.

WBHIRA Registration No. HIRA/P/PUR/2021/001251 | www.hira.wb.gov.in