



To ensure customer delight by delivering value added superior quality products;  
and building world-class, innovative & cost-effective spaces;  
and thus become the most preferred Realty Company.



Promoters:

**PODDAR PROJECT LTD.**

Poddar Court, 9th Floor, Gate No. 1  
18, Rabindra Sarani, Kolkata-700001  
Ph: 62922 60664, 90510 30683  
Email : marketing@bppgrp.com



*Phoenix Realty*

*GT Road, Golapbag More, Burdwan*  
*W. www.phoenix-realty.in*  
*Contact: 9800842469 || 9674099491*



**MAHALLA KESHABGANJ**  
**NEAR RAILWAY STATION, BURDWAN**  
**Opp. SUN HOSPITAL**

Disclaimer: This brochure is neither a legal document nor a legal offering. It only describes the intent and purpose of PPL Group. The information, details and specifications can be altered by the developers.



**Life is ...**  
**... where Comfort is**

A Commercial cum Residential Complex

# Welcome...

## ...to The Comfort Zone of Burdwan

You have worked hard, taken risks and made your life worth living: you have moved out of your difficult zones so that you could live your life & work in the right peaceful zone-in true style.

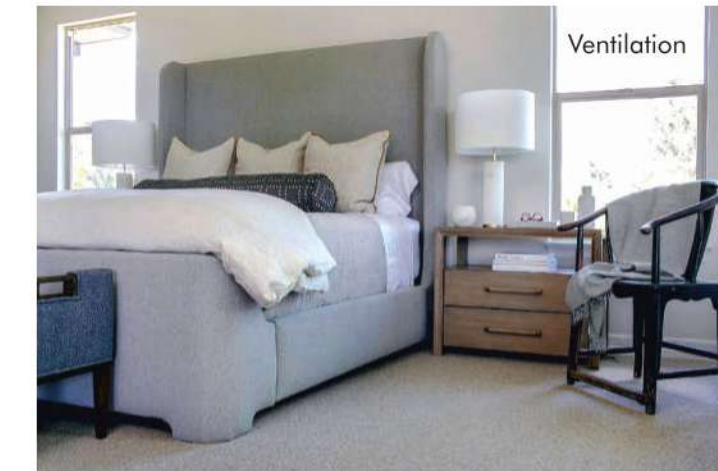
Burdwan Residency 5 is designed with commercial G+1 and residential 2nd to 7th floor having 2/3 side open with 44 Premium Flats and built speciously to make your life easy, natural and...ummm... very, very interesting.



# Comfort is... ...where your needs are taken care of



At Burdwan Residency 5, your requirements are meticulously taken care of. Inspired by a mother's concern for her child's needs, we have ensured that you get nothing less than the best, from all the basic amenities, facilities & specifications to a plush ambience.



- Most Desired Prime Location
- Healthy Environment
- Separate entrance for Commercial & Residential Area
- Attractive elevation
- Exteriors chemically treated
- High-speed automatic Kone /equivalent elevator
- Ergonomically designed staircase for easy movement
- Maximum cross ventilation in all rooms
- 24 hours water

- Allotted car parking\*
- Surveillance cameras at strategic locations
- Multi-level 2 point security with CCTV
- DG power backup for continuous power supply\*
- Intercom facility
- Well planned and user friendly kitchen having granite platform
- Jaquar / equivalent bathroom fittings
- Designer tile elevation in all bathrooms

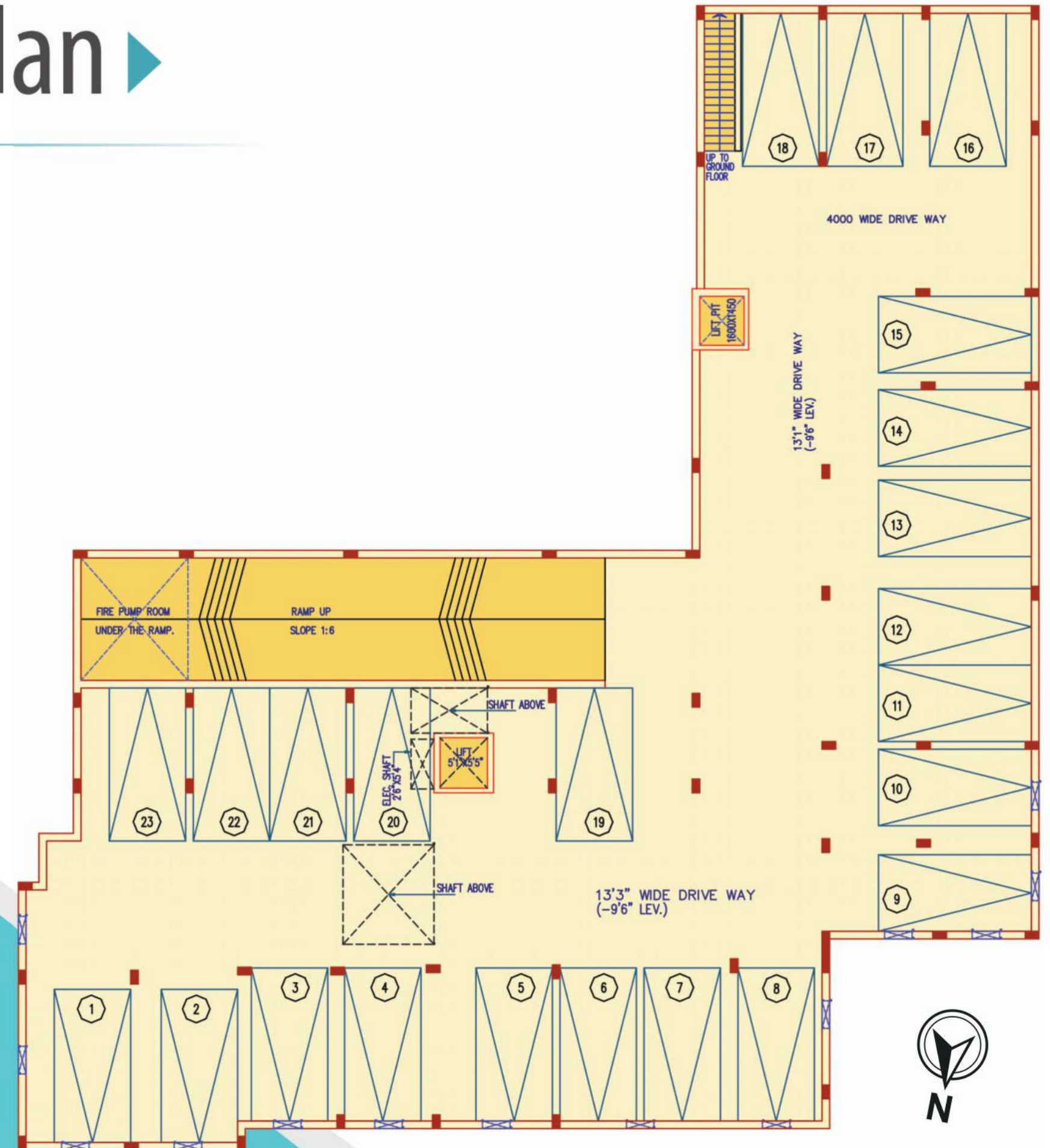
# Comfort is... ...when your mind is at peace

With the world becoming more complicated and stressful, the problems of assured services, Location & connectivity are becoming a major concern for a peaceful & comfort living. Burdwan Residency 5 offers one of the best location with Hospital & Nursing Home, Railway Station, Medical College, Bank, Shiv Mandir, Market, School etc. are all within stone throw. Put your mind at ease. We give you assurance of great living.

## Location Map



## Basement Plan



# Ground Floor Plan



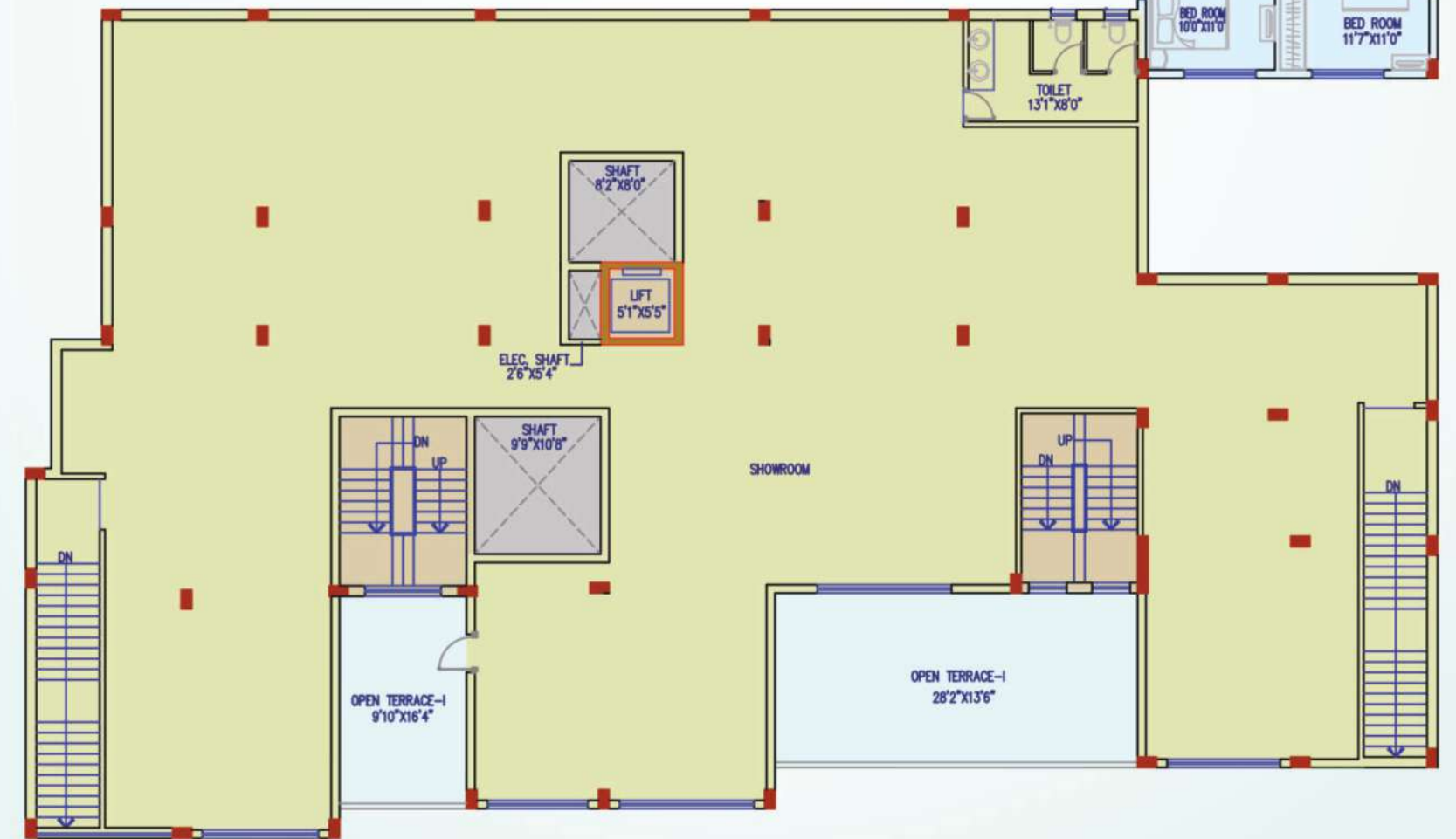
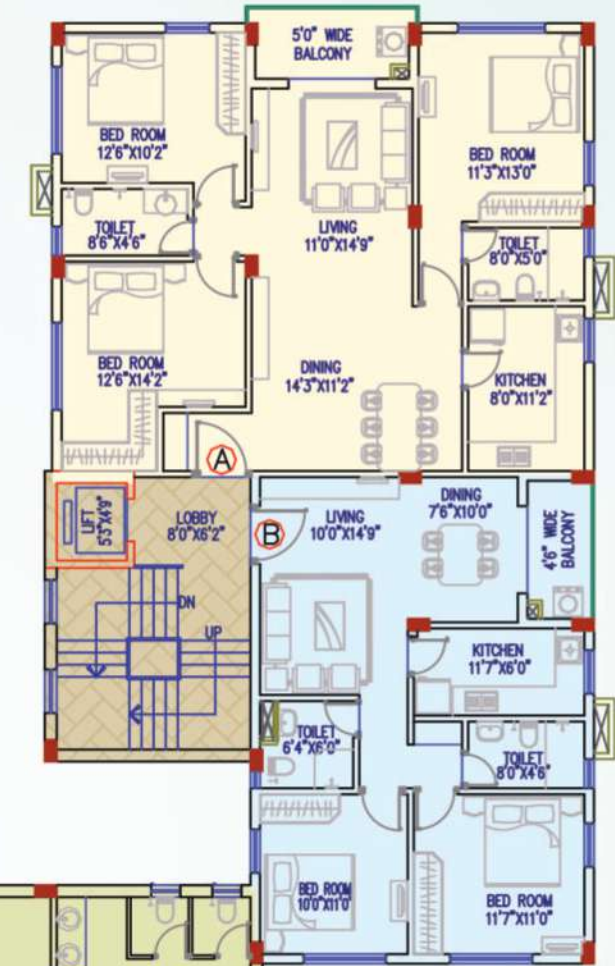
Floor	Unit No.	Type of Unit	Carpet Area Excluding Balcony (Sq. Ft)
GROUND	1	Commercial	3459



# First Floor Plan



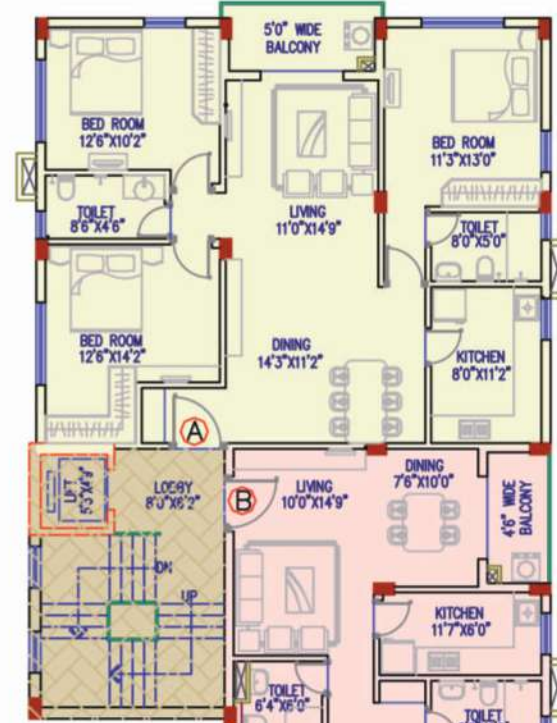
Floor	Unit No.	Type of Unit	Carpet Area Excluding Balcony (Sq. Ft)	Exclusive Balcony Area (Sq. Ft.)	Open Terrace Area (Sq. Ft.)
1st	2	Commercial	4407		543
1st	A	3 BHK	1008	53	
1st	B	2 BHK	664	42	



# 2nd & 7th Fl Plan

## Area Chart

Floor	Unit No.	Type of Unit	Carpet Area Excluding Balcony (Sq. Ft.)	Exclusive Balcony Area (Sq. Ft.)
2nd to 7th	A	3 BHK	1008	53
2nd to 7th	B	2 BHK	664	42
2nd to 7th	C	3 BHK	889	34
2nd to 7th	D	3 BHK	874	38
2nd to 7th	E	3 BHK	807	38
2nd to 7th	F	3 BHK	800	36
2nd to 7th	G	3 BHK	771	37



## Past Projects ...



Bardhaman Arcade



Bardhaman Residency



B. P. Poddar Hospital



B. P. Poddar College



Delhi Public School, Kashi

Comfort is ...  
... when you know  
you can trust



**B. P. Poddar Group**

The Group is one of the pioneers in Infrastructure and Housing development since six decades. With a strong reputation for innovative design, superior engineering and quality construction. The Group is highly diversified with ventures in healthcare, education, agriculture and pharmaceuticals. With Upanitika, the Group is fulfilling its corporate social responsibility of providing affordable housing for the common man.

The Group has constructed one of the largest commercial landmarks known as Poddar Court, in the heart of Kolkata, with floor area of 5 lac sq.ft. having Govt. Offices, Insurance Companies and Banks.

The Group has constructed a shopping mall, Burdwan Arcade in Bardhaman with a Multiplex covering 2 lac.sq.ft. with Big Bazaar and Inox. Purbasha Bus cum Truck Terminal at Alisha. The Group has successfully completed various residential projects in Bardhaman as well as Kolkata with more than 50 lacs sq. ft. area.